



KYLEMORE ABBEY

Get to Know Galway

Presented by Jessica Ridge, Marketing
Manager with Kylemore Abbey

INTRODUCTION

Kylemore Abbey; Benedictine Monastery and Visitor Attraction.

The 1,000-acre estate consists of the Abbey & visitor experience, 6.5-acre Victorian Walled Garden, neo-Gothic Church, Kylemore Woodland's Trails & Tales, Kylemore Kitchen Food outlets and the Kylemore Gift and Craft shop.

Plans are to continue to grow our offerings including our chocolate making, walks on the estate, and hands on experiences.



SAFETY FIRST

- Kylemore Abbey is registered on Failte Ireland's Safety Charter.
- Hand sanitisation points, 2m Social Distancing, mask wearing, and contact tracing is observed where required on the estate.
- Talks, music recitals and certain events may be dependent on guidelines yet to be announced.

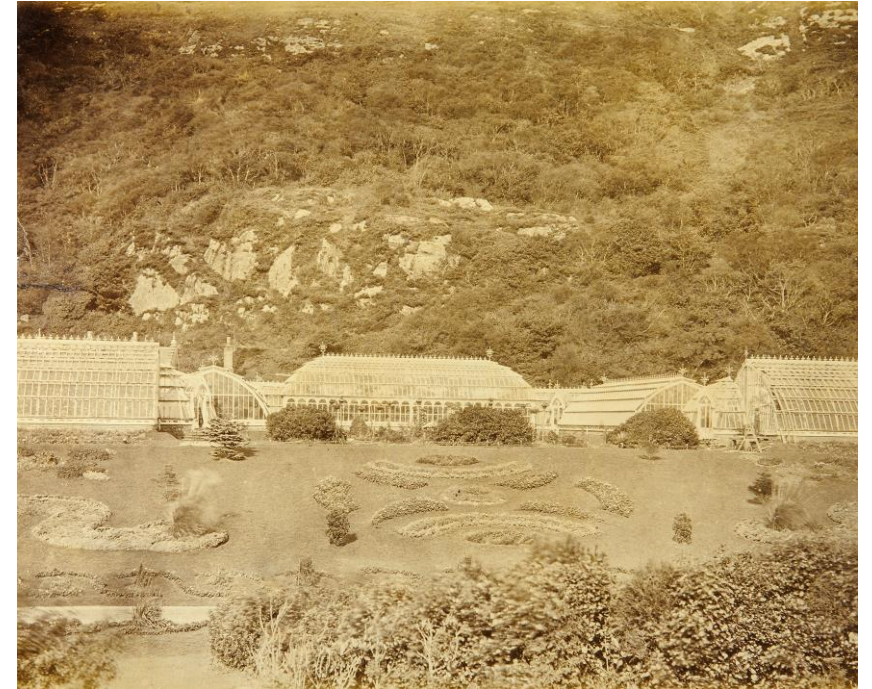


HISTORY OF KYLEMORE

- Built in 1867 by surgeon and businessman Mitchell Henry for his wife, Margaret.
- A nesting place, a place of social good, and place of innovation.
 - Farming methods
 - Hydroelectric plants
 - Tenants rights

The castle was completed in 1871. Just 3 years later Margaret Henry passed away.

In 1903 the estate was sold to the Duke & Duchess of Manchester.



Top: 21 Glasshouses of the Victorian Walled Garden

Bottom: Henry Family on their carriage. Photographed by Lorenzo Henry

HISTORY OF KYLEMORE

- For 10 years the Kylemore estate was run by the Duke and Duchess of Manchester.
- A very glamorous couple who made many changes to the estate.
- Well liked locally but unfortunately became bankrupt and were forced to sell the estate and the castles contents.
- For 7 years the estate the estate laid empty and became increasingly overgrown.

Helena Zimmerman, Duchess of Manchester, dressed for King George VI inauguration.



BENEDICTINE NUNS

The Irish Dames of Ypres, a Benedictine order of Nuns in Ypres Belgium, ran a prestigious boarding school for Irish Catholic girls. This was during a time in which Catholics could not receive an education in Ireland.

When WW1 broke out, Ypres was one of the most affected cities in Europe and the Monastery was shelled. Causing the Nuns to flee Belgium as refugees.

They spent time in the U.K. and Macmine in Wexford before making their way to Connemara.

On the 4th of December 1920 the Benedictine Nuns arrived in Kylemore, they bought in £45,000 and made it their home, turning the castle into an Abbey for the past 101 years.



Shelled monastery of the Benedictine Dames of Ypres, Belgium



ORA ET LABORA: EDUCATION & ENTERPRISE

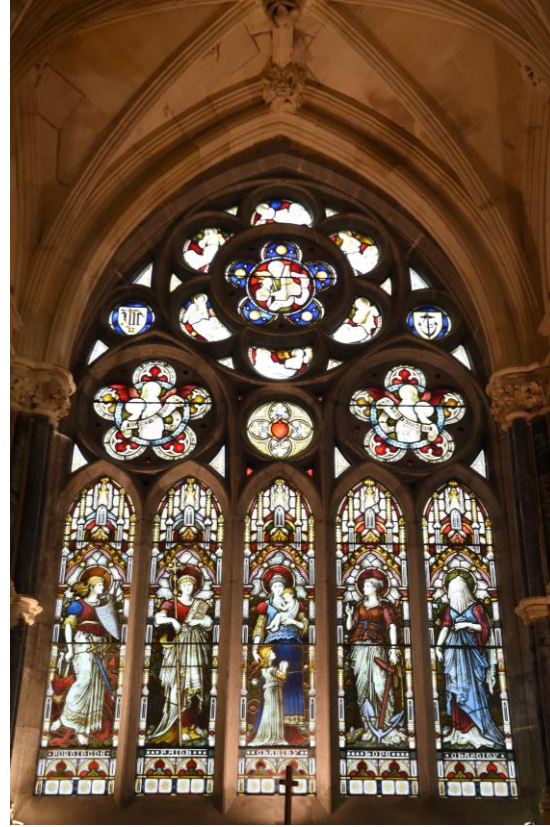
Ora et Labora – Prayer and Work is the key ethos of the Benedictine Nuns

- In 1923 the Benedictine Nuns opened a boarding school in Kylemore. The all-girls school at first accepted international boarders of all ages. Later it became a secondary school and also began accepting local day pupils.
- Through the 60's and 70's, Kylemore operated as a guest house during the Summer months.
- By the early 90's Kylemore was opening it's doors as a visitor attraction. The significant project of restoring the Victorian Walled Garden and neo-Gothic Church
- In 2010 the school closed.
- Education in Kylemore continues through Sr. Karol's music teaching, the University of Notre Dame and through the WorkAway and intership programmes.

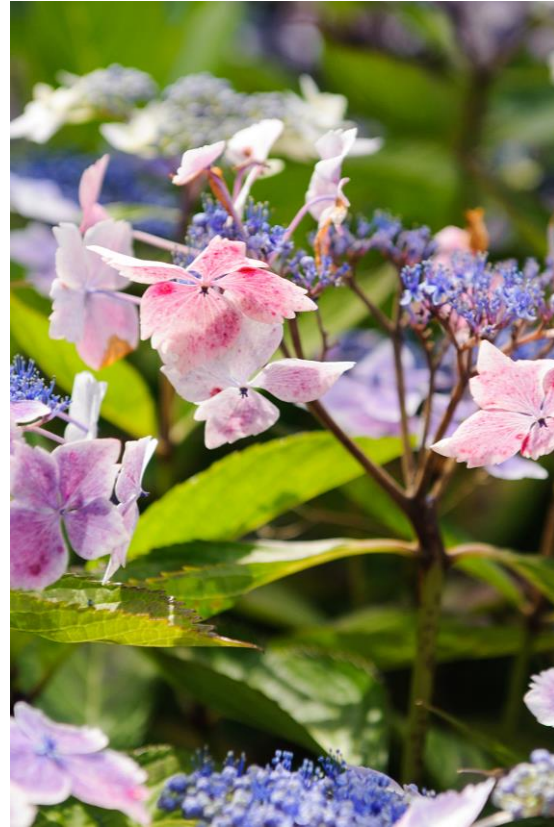




KYLEMORE ABBEY



NEO-GOTHIC CHURCH & MAUSOLEUM



VICTORIAN WALLED GARDEN & FARM FRIENDS



WOODLAND TRAILS & TALES





FLAVOURS AND GIFTS FROM KYLEMORE

A VISIT TO KYLEMORE

Now, a visit to Kylemore takes you on a tour of the highlights of the estate seeing the restored buildings and gardens and new extended trails and tales.

- From Generation to Generation visitor experience with multimedia displays and restored period rooms
- Daily history talks plus speciality talks for the Autumn and 2022
- Music recitals in the neo-Gothic Church (seat 80pax)
- Delicious locally sourced and freshly prepared west of Ireland dishes. (main eating area contains 80 indoor seats, Tea House area contains 40 indoor seats)
- Kylemore Handmade products and Irish crafts & gifts.
- Daily Mass at 12:15pm daily (11:30am on Sundays) in the monastic church.
- Feeding Time with the Ponies & Pigs



GROUPS

Private Tours for Groups and Families

- These tours can be tailored to the time allowed or how much of the estate the group would like to visit
- Max 25 people per guide
- Pre-booking essential

Private Guided Hikes (2022)

- Short and long hikes of Duchruach Mountain
- Up to 15 people
- Pre-booking essential

An Evening in Kylemore Abbey –Luxury Experience (2022)

- Private, after hours, bespoke tour of Kylemore Abbey & neo-Gothic Church
- Supper of Connemara foods served in the Abbey
- Private music recital in the neo-Gothic Church
- Bespoke packages to fit groups needs
- For groups of 2-10 pax

Garden Tours with our Head Gardener

- Ideal for special interest groups
- Up to 15 people
- Prebooking essential

Behind-the-Scenes Tours (returning in 2022)

- Go behind the scenes and see the Kylemore Chocolate and soap being handmade by the Benedictine Nuns & see our wonderful potter crafted the iconic Kylemore Fuchsia pottery.
- Groups up to 15pax

TOP TIPS

- Arrive early – your ticket gives you entry for the full day, so make the most of it, arrive early and stay all day.
- Allow yourself time – we recommend a minimum of three hours.
- Plan ahead- our new website is due to launch in the coming weeks and is packed full of information as well as resources, maps, and a schedule of what's on each day in Kylemore.
- A wheelchair accessible shuttle bus is provided between the Abbey and garden, if you are able, we highly recommend visitors take in the walk at least one way. The 1 mile path passes a secluded grotto, a beautiful waterfall, old fishery building and beautiful scenery across lakes and the Diamond Hill.
- Suitable for the whole family & Under 16's go free!
- As you pass, peek into Sr. Genevieve's Chocolate Kitchen to see the Benedictine Nuns making the delicious chocolatey treats.
- Get in touch! We love to hear from groups and individuals who are planning a day in Kylemore.





KYLEMORE ABBEY

Thank you for listening!

If you would like to learn more about Kylemore Abbey you can visit our website www.kylemoreabbey.com, contact our bookings team at bookings@kylemoreabbey.com or 09552001 and follow us on Facebook, Instagram, twitter and LinkedIn.



Jessica Ridge – jessica@kylemoreabbey.com